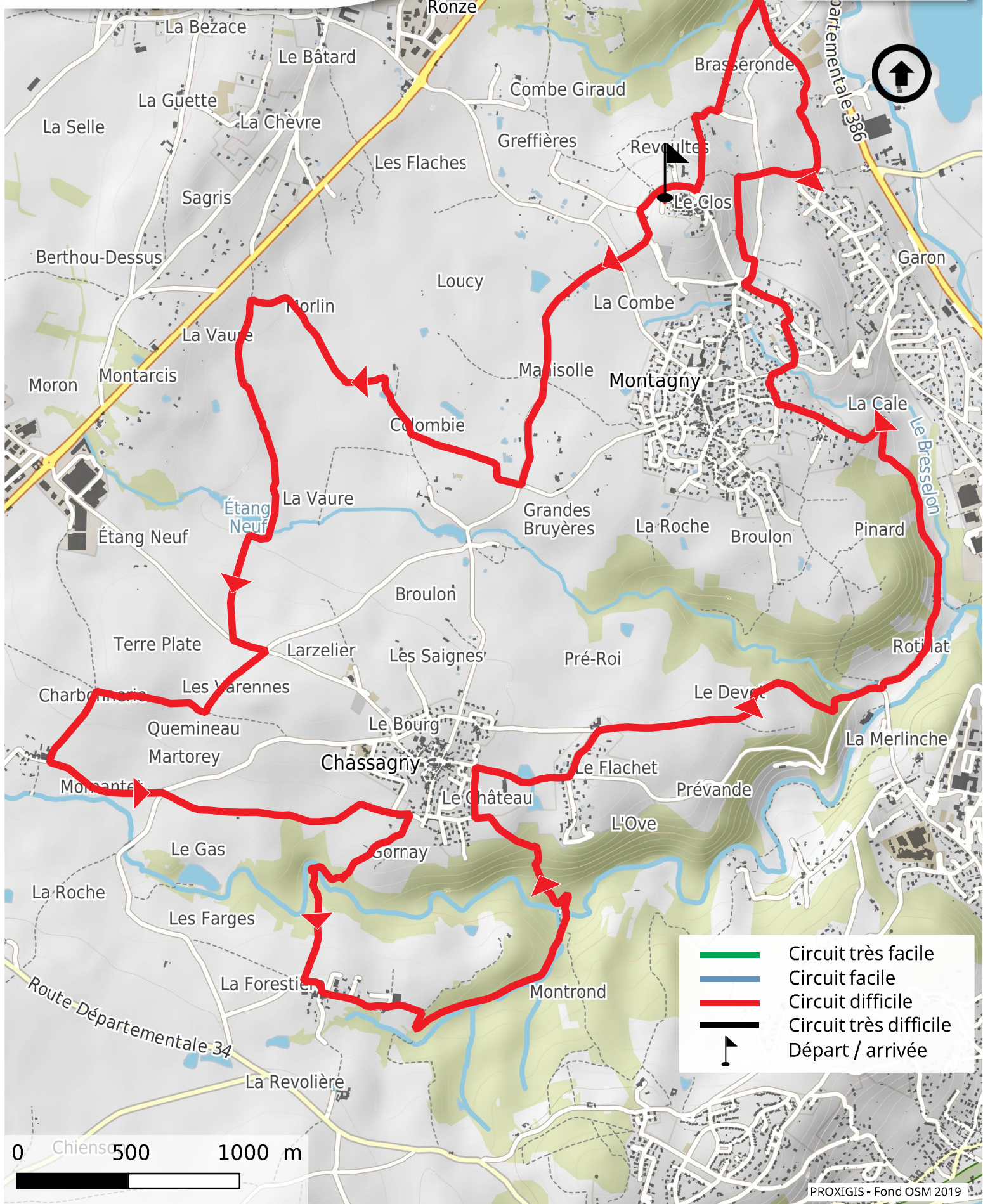







# LE GARON EN VTT CIRCUIT N° 231 "LES LANDES DE MONTAGNY"

Départ Parking route du Bourg – Montagny  
19,8 km - 420 m D+



-  Circuit très facile
-  Circuit facile
-  Circuit difficile
-  Circuit très difficile
-  Départ / arrivée

0 500 1000 m